

WaterGroup®

WG185DF Series Water Softener

Mid Efficiency with Added Features



Offers a balance of technology and features at a great price point.

User-friendly backlit LCD display with "No Touch" information display



*Compared to conventional calendar clock models

All Systems Include:

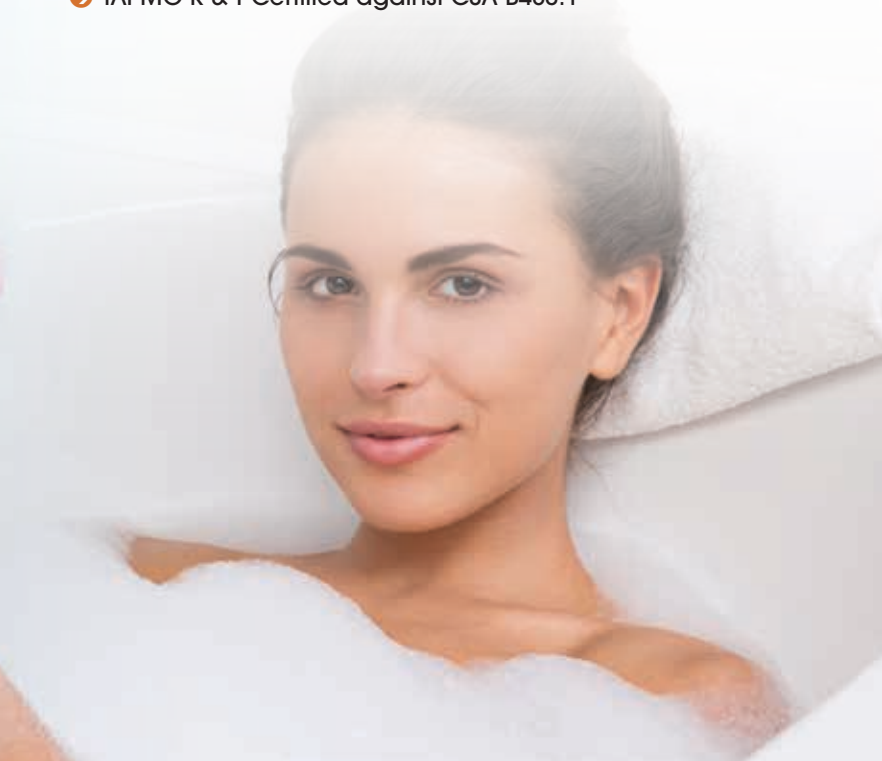
- ▶ **NSF Certified** pressure tank 
- ▶ **NSF Certified** control valve 
- ▶ **IAPMO Certified** cation resin



IAPMO R & T Certified
Against NSF/ANSI 44 and
CSA B483.1

Features:

- ➔ Exclusive WG 185DF NSF Certified electronic control valve with reliable piston, seal and spacer technology
- ➔ Cabinet or Twin Tank models
- ➔ User-friendly backlit LCD display
- ➔ "No Touch" information display rotates key info like last regeneration date and volume remaining
- ➔ 48 hour memory back-up
- ➔ Meter Immediate, Meter Delayed, Meter Override, and Calendar Clock mode
- ➔ Adjustable cycle times
- ➔ Brine safety valve provides extra overflow protection
- ➔ Unique pre-installed bypass with an integrated space saving turbine meter and sample ports on the inlet. One-piece design avoids meter jamming.
- ➔ Time saving quick connect fittings on bypass, drain and brine line. Power cord even has quick connect for easy valve spin on.
- ➔ Drain line o-ring eliminates need for Teflon
- ➔ Condensation tank jacket (twin tank models)
- ➔ Injection molded brine grids (twin tanks only)
- ➔ Hose clamp and 10' of drain tubing included
- ➔ IAPMO R & T Certified against CSA B483.1



| Specifications | WG185DF-075C | WG185DF-100C | WG185DF-075 | WG185DF-100 | WG185DF-125 | WG185DF-200 | WG185DF-300 |
|---|--|--------------------|-------------|-------------|--------------|--------------|--------------|
| | 2110 | 2111 | 2112 | 2113 | 2114 | 2115 | 2116 |
| Optional Settings - High Efficiency | | | | | | | |
| Salt Used - Per Regeneration | 2.3 lbs | 3.0 lbs | 2.3 lbs | 3.0 lbs | 3.75 lbs | 6.0 lbs | 9.0 lbs |
| Water Used - Regeneration | 22.7 US gal | 28.3 US gal | 22.6 US gal | 31.6 US gal | 39.5 US gal | 60.9 US gal | 102.2 US gal |
| Hardness Removal - Grains | 11,250 | 15,000 | 11,250 | 15,000 | 18,750 | 30,000 | 45,000 |
| Factory Settings - Standard Capacity | | | | | | | |
| Salt Used - Per Regeneration | 4.5 lbs | 6.0 lbs | 4.5 lbs | 6.0 lbs | 7.5 lbs | 12.0 lbs | 18.0 lbs |
| Water Used - Regeneration | 40.5 US gal | 48.6 US gal | 34.0 US gal | 43.4 US gal | 54.3 US gal | 87.1 US gal | 139.2 US gal |
| Hardness Removal - Grains | 18,750 | 25,000 | 18,750 | 25,000 | 31,250 | 50,000 | 75,000 |
| Optional - High Capacity | | | | | | | |
| Salt Used - Per Regeneration | 7.5 lbs | 10.0 lbs | 7.5 lbs | 10.0 lbs | 12.5 lbs | 20.0 lbs | 30.0 lbs |
| Water Used - Regeneration | 56.1 US gal | 69.5 US gal | 49.6 US gal | 64.3 US gal | 80.37 US gal | 124.6 US gal | 196.2 US gal |
| Hardness Removal - Grains | 22,500 | 30,000 | 22,500 | 30,000 | 40,000 | 60,000 | 90,000 |
| Resin Quantity - Cubic Feet | 0.75 ft | 1.0 ft | 0.75 ft | 1.0 ft | 1.25 ft | 2.0 ft | 3.0 ft |
| Tank Size | 9x35 | 10x35 | 9x35 | 10x35 | 10x47 | 12x52 | 14x65 |
| Tank Jacket / Media Loaded | Yes | Yes | Yes | Yes | Yes | No | No |
| Brine Tank / Cabinet Size (Inches) | 16.5 x 19.3 x 43.3 | 16.5 x 19.3 x 43.3 | 18.1 x 34.5 | 18.1 x 34.5 | 18.1 x 34.5 | 20.3 x 37.4 | 23.0 x 40.5 |
| Salt Storage Capacity | 175 lbs | 175 lbs | 240 lbs | 240 lbs | 240 lbs | 350 lbs | 420 lbs |
| Flow Rate @ 15 psi Pressure Drop | 11.6 gpm | 12.0 gpm | 10.4 gpm | 11.0 gpm | 12 gpm | 12.2 gpm | 12.6 gpm |
| Flow Rate @ 25 psi Pressure Drop | 15.6 gpm | 16.0 gpm | 14.3 gpm | 15.0 gpm | 15.5 gpm | 16.2 gpm | 16.6 gpm |
| Back Wash Flow Rate | 2.0 gpm | 2.4 gpm | 1.5 gpm | 2.0 gpm | 2.4 gpm | 3.5 gpm | 5.0 gpm |
| Shipping Weight | 93 lbs | 110 lbs | 105 lbs | 122 lbs | 154 lbs | 172 lbs | 244 lbs |
| Regeneration Type | Co Current / Down Flow | | | | | | |
| Plumbing Connections | Includes 3/4" 90°Elbows & 1" Straight NPT | | | | | | |
| Resin Type | Aquafine 8% High Capacity Ion Exchange Resin | | | | | | |
| Electrical Requirements | Input 120V 60 Hz - Output 12V 650mA | | | | | | |
| Water Temperature | Min 39 - Max. 100 degrees Fahrenheit | | | | | | |
| Water Pressure | Min. 20 - Max. 125 psi | | | | | | |



WaterGroup®

Toll Free: 1-877-288-9888

www.watergroup.com

Regina, SK • Cambridge, ON • Whitestown, IN

Phoenix, AZ • Houston, TX • Guadalajara, MX

Your Local Plumbing Professional

80156024 2022-11-04
Download only.