

# Flow-Thru Expansion Tanks



FT 66, FT 144 & FT 266



Available by special order.

These new tanks include the controlled action diaphragm that makes Flexcon tanks the industry's best. In addition, they have added a stainless steel tee with the Flow-Thru design to the inlet. This innovation actually flushes water through the tank while the system pump is running, thus ensuring that the water in the tank stays fresh.

## Flow Thru Composite Tanks

Flexcon's new line of composite tanks incorporate CAD-2 our patented controlled action diaphragm.

CAD-2's steel clench ring regulates movement and prevents the diaphragm from rubbing against the tank wall. It has made Flexcon tanks the Industry leader.

Flow-Thru is the ideal solution for constant pressure water system installers seeking to store water without the risk of stagnation.

FTC 15, FTC 22, FTC 38SQ & FTC 50



## Dimensions & Capacities

Item #	Model	Total Volume Gallons	Drawdown Volume*		Dimensions (inches)		Connection	Shipping Weight (lbs)
			50 psi	60 psi	Diameter	Height		
33310	FT8	2.1	0.48	0.50	8"	12.0"	1" NPT	5
33306	FT 18	4.5	1.03	1.08	11"	14.5"	1" NPT	10
33307	FT 18 S	4.5	1.03	1.08	11"	14.5"	1" NPT	12
33311	FT 66	20.0	4.6	4.8	16"	20.8"	1-1/4" NPT	36
33313	FT 144	44.0	10.12	10.56	21"	36.25"	1-1/4" NPT	68
33314	FT 266	85.0	19.55	20.4	26"	44.5"	1-1/4" NPT	122
33325	FTC 15	15.0	3.45	3.6	16.5"	25.6"	1-1/4" sch 80	19
33326	FTC 22	22.0	5.06	5.28	16.5"	33.1"	1-1/4" sch 80	24
33327	FTC 38SQ	38.0	8.74	9.12	24.2"	29.75"	1-1/4" sch 80	35
33328	FTC 50	50.0	11.5	12.0	21.4"	42.9"	1-1/4" sch 80	41

Maximum Working Temperature: 140°F (55°C)  
 Maximum Working Pressure: 125 PSI (8.4 bar)  
 Certified to ANSI/NSF 61 (73°F/23°C)  
 Steel/Stainless Steel tank pre-charge 35 psig.  
 Composite tank pre-charge 20 psig.

\*Based on precharge set at 70% of set point of constant pressure controller. Drawdown can be affected by many factors, including temperature, pressure and elevation.

# MonoDrive & MonoDriveXT

Designed to handle single-phase three-wire pumping systems up to 2 hp, MonoDrive and MonoDriveXT is the industry's only constant pressure system to offer outdoor rated NEMA 4 enclosure protection. Ideal for applications where constant pressure is desirable: residential water systems, landscaping, water treatment and geothermal applications.

The MonoDrive and MonoDriveXT are designed to convert a conventional 1/2 hp, 3/4 hp or 1 hp and 1.5 hp or 2 hp pump system, respectively, to a variable speed constant pressure system by simply replacing the 3-wire control box and pressure switch. Maximum pump output using the MonoDrive or MonoDriveXT is similar to the performance achieved using a conventional control box. Therefore, the pump selection criteria are the same as if a control box were used.

## Applications

- Residential Homes
- Schools
- Restaurants
- Car Washes
- Farms
- Landscape Irrigation Systems

## Features & Benefits

- Industry's only single-phase, outdoor constant pressure system
- Single-phase three-wire motor control
- 1/2 hp to 2 hp performance
- Easy to install outdoor (NEMA 4) rated enclosure
- Plug & Play
- Industry's best power factor correction
- Built-in diagnostic protection
  - Surge protection
  - Open circuit
  - Underload
  - Short circuit
  - Undervoltage
  - Overheated controller
  - Locked pump
- UL and CUL listed

MonoDrive  
Item #302658



MonoDriveXT  
Item #302661

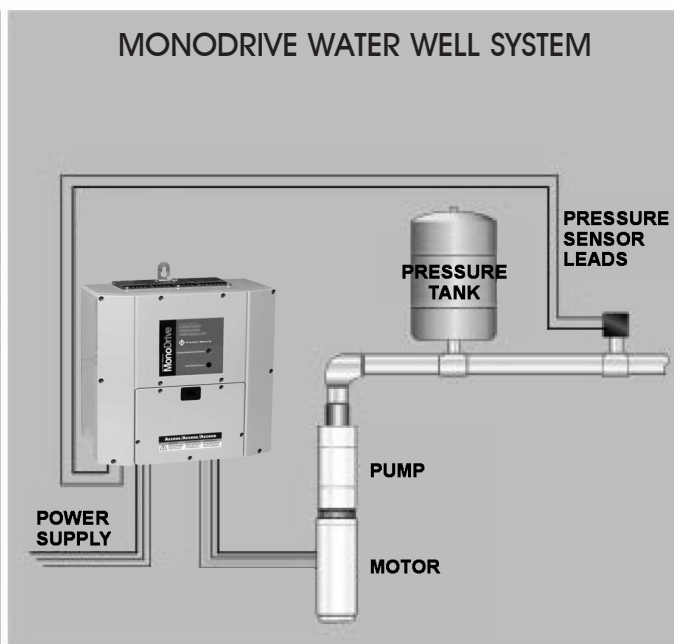
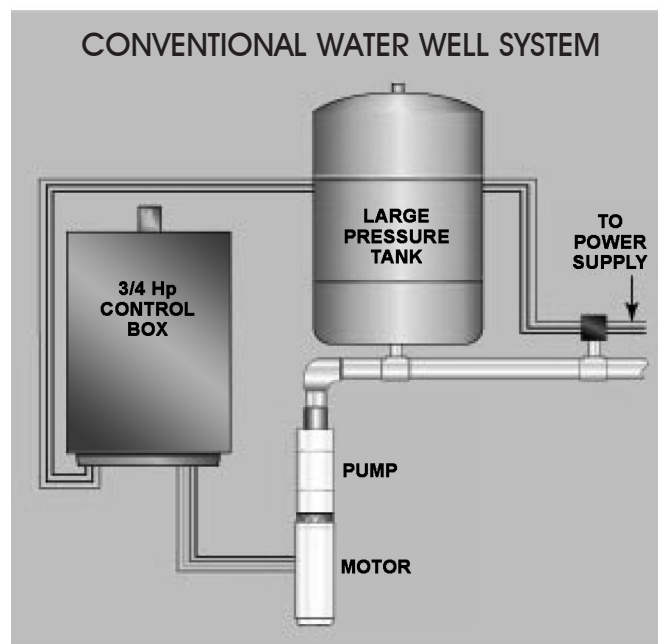


# MonoDrive & MonoDriveXT

## Specifications

	MonoDrive	MonoDriveXT
Input (From Power Source)		
Voltage	190-260 V 1-Phase	190-260 V 1-Phase
Frequency	60/50 Hz	60/50 Hz
Max Amps (RMS)	5.7 A (1/2 hp) 8.7 A (3/4 hp) 11 A (1 hp)	13 A (1.5 hp) 16 A (2 hp)
Power Factor	1 (Constant)	1 (Constant)
Output (To Motor)		
Voltage	Variable/1-Phase	Variable/1-Phase
Frequency	Variable (30-60 Hz)	Variable (30-60 Hz)
Max Amps (RMS)	4.0 A (1/2 hp) 6.6 A (3/4 hp) 9.0 A (1 hp)	10 A (1.5 hp) 12 A (2 hp)
For Use With:		
Pump Rating	1/2, 3/4 or 1 hp (Selectable)	1.5 or 2 hp (Selectable)
Motor Rating	1/2, 3/4 or 1 hp 230 VAC (1-Phase)	1.5 or 2 hp 230 VAC (1-Phase)
Pressure Sensor (Included)	External	External
Controller Weight - N1	15.00 lbs (6.80 kg)	17.50 lbs (7.94 kg)
Controller Weight - N4	24.14 lbs (10.95 kg)	28.32 lbs (12.84 kg)
Carton Size - N1 (H x W x D)	16-1/2 x 12-3/8 x 9" 41.9 x 31.4 x 22.9 cm	16-1/2 x 12-3/8 x 9" 41.9 x 31.4 x 22.9 cm
Carton Size - N4 (H x W x D)	17-1/2 x 16-3/8 x 11-3/8" 44.5 x 41.6 x 28.9 cm	17-1/2 x 16-3/8 x 11-3/8" 44.5 x 41.6 x 28.9 cm
Shipping Weight - N1	19.23 lbs (8.72 kg)	21.28 lbs (9.65 kg)
Shipping Weight - N4	30.91 lbs (14.02 kg)	35.09 lbs (15.92 kg)

\*N1 = NEMA 1 (Indoors), N4 = NEMA 4 (Outdoors)



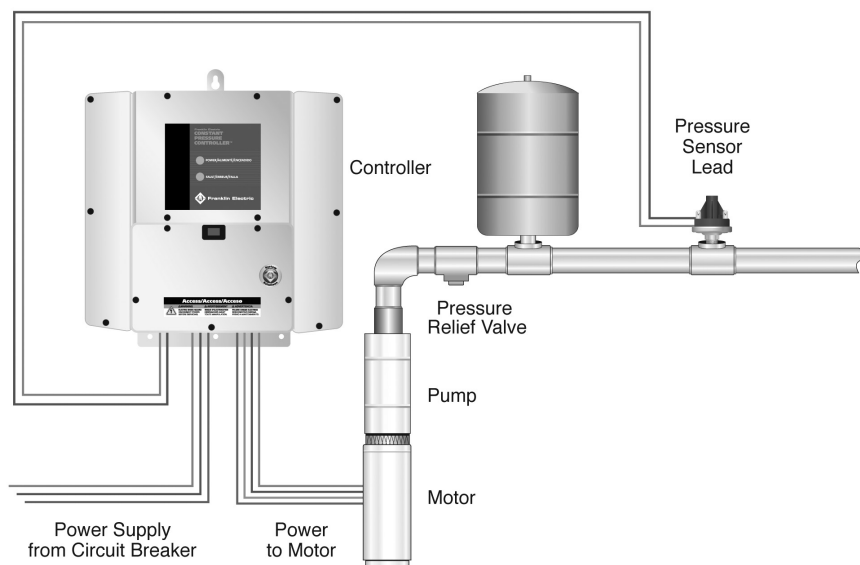
# SubDrive 75, 150 & 300

## Specifications

	SubDrive 75	SubDrive 150	SubDrive 300
<b>Input (From Power Source)</b>			
Voltage	190-260 V 1-Phase	190-260 V 1-Phase	190-260 V 1-Phase
Frequency	60/50 Hz	60/50 Hz	60/50 Hz
Max Amps (RMS)	11 A	23 A	36 A
Power Factor	1 (Constant)	1 (Constant)	1 (Constant)
<b>Output (To Motor)</b>			
Voltage	Variable/3-Phase	Variable/3-Phase	Variable/3-Phase
Frequency	Variable (30-80 Hz)	Variable (30-80 Hz)	Variable (30-80 Hz)
Max Amps (RMS)	5.9 A	10.9 A	17.8 A
<b>For Use With:</b>			
Pump Rating	$\frac{3}{4}$ , 1 or 1.5 hp (Selectable)	1.5, 2 or 3 hp (Selectable)	3 or 5 hp (Selectable)
Motor Rating	1.5 hp, 230 VAC (3-Phase)	3 hp, 230 VAC (3-Phase)	5 hp, 230 VAC (3-Phase)
Pressure Sensor (Included)	External	External	External
Controller Weight - N1	15.00 lbs (6.80 kg)	17.50 lbs (7.94 kg)	N/A
Controller Weight - N4	24.14 lbs (10.95 kg)	28.32 lbs (12.84 kg)	35.15 lbs (15.94 kg)
Carton Size - N1 (H x W x D)	16- $\frac{1}{2}$ x 12- $\frac{3}{8}$ x 9"	16- $\frac{1}{2}$ x 12- $\frac{3}{8}$ x 9"	N/A
Carton Size - N4 (H x W x D)	17- $\frac{1}{2}$ x 16- $\frac{3}{8}$ x 11- $\frac{3}{8}$ "	17- $\frac{1}{2}$ x 16- $\frac{3}{8}$ x 11- $\frac{3}{8}$ "	19- $\frac{7}{8}$ x 17- $\frac{1}{2}$ x 14- $\frac{1}{4}$ "
Shipping Weight - N1	19.23 lbs (8.72 kg)	21.28 lbs (9.65 kg)	N/A
Shipping Weight - N4	30.91 lbs (14.02 kg)	35.09 lbs (15.92 kg)	40.95 lbs (18.57 kg)

\*N1 = NEMA 1 (Indoors), N4 = NEMA 4 (Outdoors)

## CONSTANT PRESSURE SYSTEM



# Franklin Electric QD Pumptec

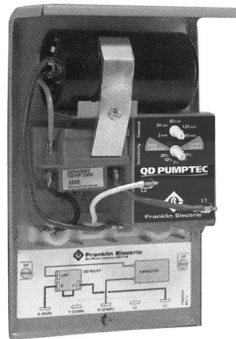
The best way to protect a submersible motor and pump

Designed and Tested by  
Franklin Electric for Franklin Electric  
**Accept No Substitutes!**

Easily Plugs Into 3-Wire QD Control Boxes  
No Additional Wiring or Tools Required



Made exclusively for your Franklin Electric QD Control Box, QD Pumptec is a solid-state, load sensing device that monitors motor load and automatically shuts off a Franklin single-phase, 3-wire motor when the load drops below a preset level.



### Q D Pumptec Protects Against:

- Low yield wells
- Worn pump parts
- Drop in water level
- Broken shaft or coupling
- Clogged well screen
- Air or gas locked pump
- Low voltage

## QD Pumptec, Designed to Perform

### Features

- Works with all Franklin 3-wire, single-phase submersible motors 1/3 - 1 HP, 230V\*
- Easy installation - installs in seconds
- Auto or manual reset
- Surge resistant
- Moisture and insect resistant
- Solid-state electronic circuitry
- Made specifically for the Franklin Electric QD Control Box - "The one with the blue relay"
- One year factory warranty

QD Pumptec, like Pumptec, is a solid-state, load sensing control that protects your submersible pump system and reduces the odds that you will ever have to see it again.

To find out how QD Pumptec and Pumptec can protect your submersible pump system, ask your submersible pump supplier or contact us directly.

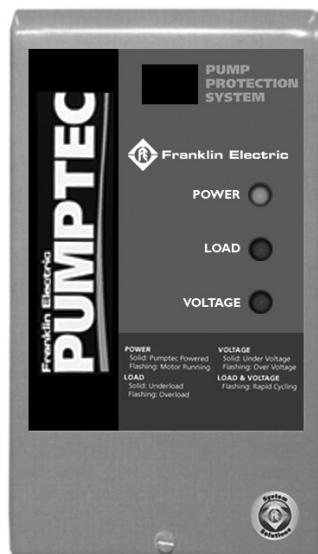
### Q D Pumptec Technical Specifications

Item Number	302656
F.E.Model Number	5800070100
Voltage	230V 60 Hz
HP Rating	1/3 - 1
Response Time	4 seconds
Reset Time	3 to 90 minutes or manual reset
Trip Point	Factory Calibrated
Approval	UL Recognized for U.S. and Canada

\* Use Pumptec for 115V, 2-wire, or 1 1/2 HP applications

# Franklin Electric Pumptec

## Premium protection for your 4" pump investment



Low incoming voltage, a drop in water level, or other application hazards can seriously damage a submersible pump. The best way to protect your investment is with PumpTec. This electronic, easy-to-install control monitors motor load and automatically shuts off your Franklin single-phase 4" motor when the motor load drops below a pre-set level.

### Pumptec Protects Against:

- Low voltage
- Drop in water level
- Low yielding well
- Air or gas locked pump
- Clogged well screen
- Broken shaft or coupling
- Worn pump parts

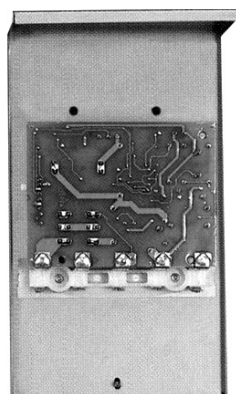
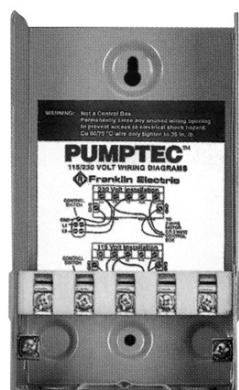
## Pumptec, Designed to Protect

### Features

- Works with Franklin 4" single-phase 2-wire or 3-wire induction-run submersible motors up to 1 HP and 1.5 HP capacitor-run motors.
- Compact Quick-Disconnect box with rugged, weather-proof construction
- Easy installation and mounting
- Field adjustable automatic reset from 2 to 90 minutes or manual reset
- "Tripped" and "Power On" indicator lights
- External signaling capability (up to 1 amp)
- Surge resistant
- UL/CUL Listed
- One year factory warranty

### Specifications

Item Number .....	302655	Voltage .....	60 Hz - 115V/230V
F.E. Model Number .....	60 Hz 580 002 0116	Trip Point .....	Factory Set
Horse Power .....	1/3 - 1.5 HP	Reset time .....	Adjustable from 2 to 90 minutes or manual reset

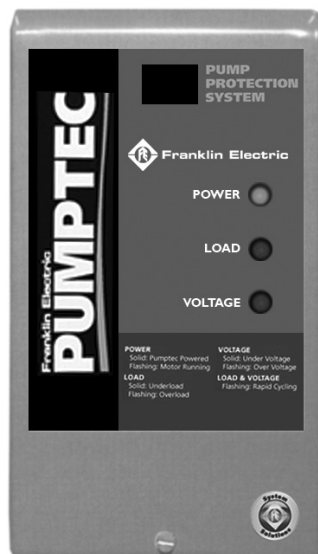


PumpTec protects the life of your 4" submersible pump and reduces the odds that you will ever have to see the motor again.

PumpTec products are the only single-phase, load monitoring devices designed specifically for Franklin submersible motors.

# Franklin Electric Pumptec

## Premium protection for your 4" pump investment



Low incoming voltage, a drop in water level, or other application hazards can seriously damage a submersible pump. The best way to protect your investment is with PumpTec. This electronic, easy-to-install control monitors motor load and automatically shuts off your Franklin single-phase 4" motor when the motor load drops below a pre-set level.

### Pumptec Protects Against:

- Low voltage
- Drop in water level
- Low yielding well
- Air or gas locked pump
- Clogged well screen
- Broken shaft or coupling
- Worn pump parts

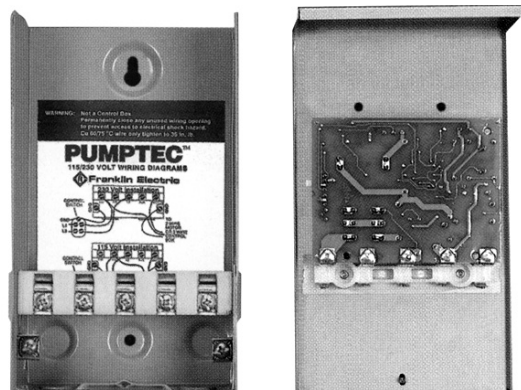
## Pumptec, Designed to Protect

### Features

- Works with Franklin 4" single-phase 2-wire or 3-wire induction-run submersible motors up to 1 HP and 1.5 HP capacitor-run motors.
- Compact Quick-Disconnect box with rugged, weather-proof construction
- Easy installation and mounting
- Field adjustable automatic reset from 2 to 90 minutes or manual reset
- "Tripped" and "Power On" indicator lights
- External signaling capability (up to 1 amp)
- Surge resistant
- UL/CUL Listed
- One year factory warranty

### Specifications

Item Number .....	302655	Voltage .....	60 Hz - 115V/230V
F.E. Model Number .....	60 Hz 580 002 0116	Trip Point .....	Factory Set
Horse Power .....	1/3 - 1.5 HP	Reset time .....	Adjustable from 2 to 90 minutes or manual reset



PumpTec protects the life of your 4" submersible pump and reduces the odds that you will ever have to see the motor again.

PumpTec products are the only single-phase, load monitoring devices designed specifically for Franklin submersible motors.