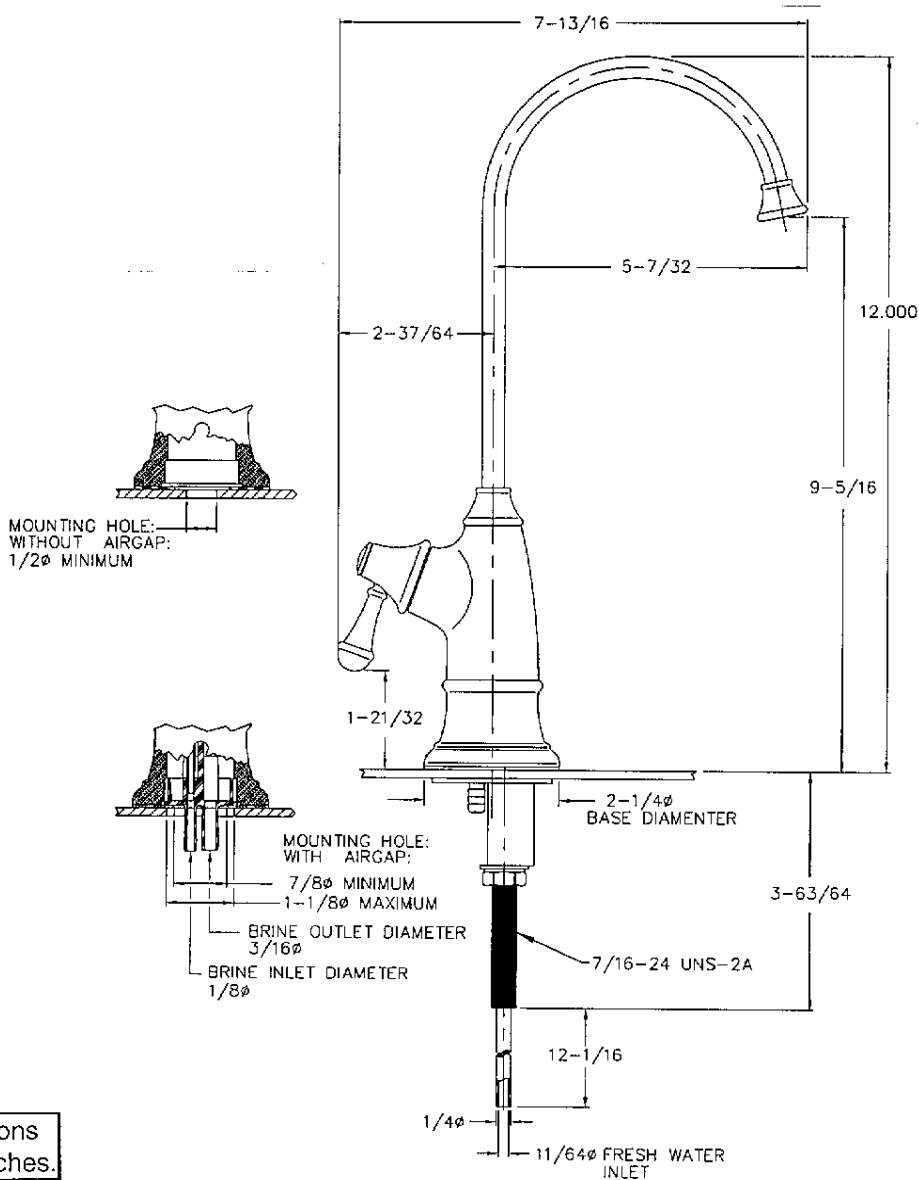


Designer RO Faucet



Dimensions are in inches.



tomlinson[®]

www.tomlinsonind.com
216/587-3400 ext. 279
Fax: 216/587-0733

Printed in U.S.A. ©Tomlinson Industries 2005

Technical Specifications:

The Designer RO Faucet is NSF listed to ANSI Std. 61-1999A.

Spout reach:	5" (127 mm)
Overall height:	12" (305 mm)
Pressure rating:	125 PSI/8.3 BAR
Flow rate:	
at 35 PSI/2.32BAR:	1.0 gpm
	3.785 lpm
Temperature rating:	40°F/4°C to 150°F/66°C
Mounting hole diameter:	1/2" without airgap
	7/8" with airgap

ITEM	DESCRIPTION
1	TIP, 77PBR SPOUT CHROME PLATED
2	GOOSENECK, 78KBR CHROME PLATED
3	O'RING, 40063-3
4	CAP, 78PGL GOOSENECK LOCK CHROME PLATED
5	BODY, 600PBR BRASS CHROME PLATED W/HOLE
6	COVER, 3KPL CHROME PLATED
7	SCREW, 212-11 M4x8MM SS W/WASHER
8	HANDLE/CAP ASSY
9	O RING, 359 11.2mm X 7.65mm X 1.78mm
10	WASHER, 79K RUBBER
11	CARTRIDGE, 600KC (1/4 TURN 1/2G THREAD)
12	AIRGAP ASSY
13	INSERT, 172KSS
14	TUBING, 1/4 O.D.x.040 WALL x 18-1/8" BLUE PE
15	FITTING, 125KBRL INLET TUBE
16	SPACER, AIR GAP (PF125AG)
17	WASHER, 188KAGE NITRILE
18	WASHER, 187KAG MOUNTING
19	WASHER, 20262-3 7/16 ID FLAT
20	WASHER, 7-729 INTERNAL TOOTH LOCK
21	NUT, 7-803-1 7/16-24
22	BASE, 77PBMAG MOUNT W/HOLE CHROME PLATED
23	WASHER, 80KS FLANGED
24	O RING, 334 .301 I.D. X .441 O.D. X .070
25	O RING, 323 .208 I.D. X .288 O.D. X .040
26	O RING, 1.313 X 1.176 X .070

